

YMCA Camp Adair

Activity Management Plan



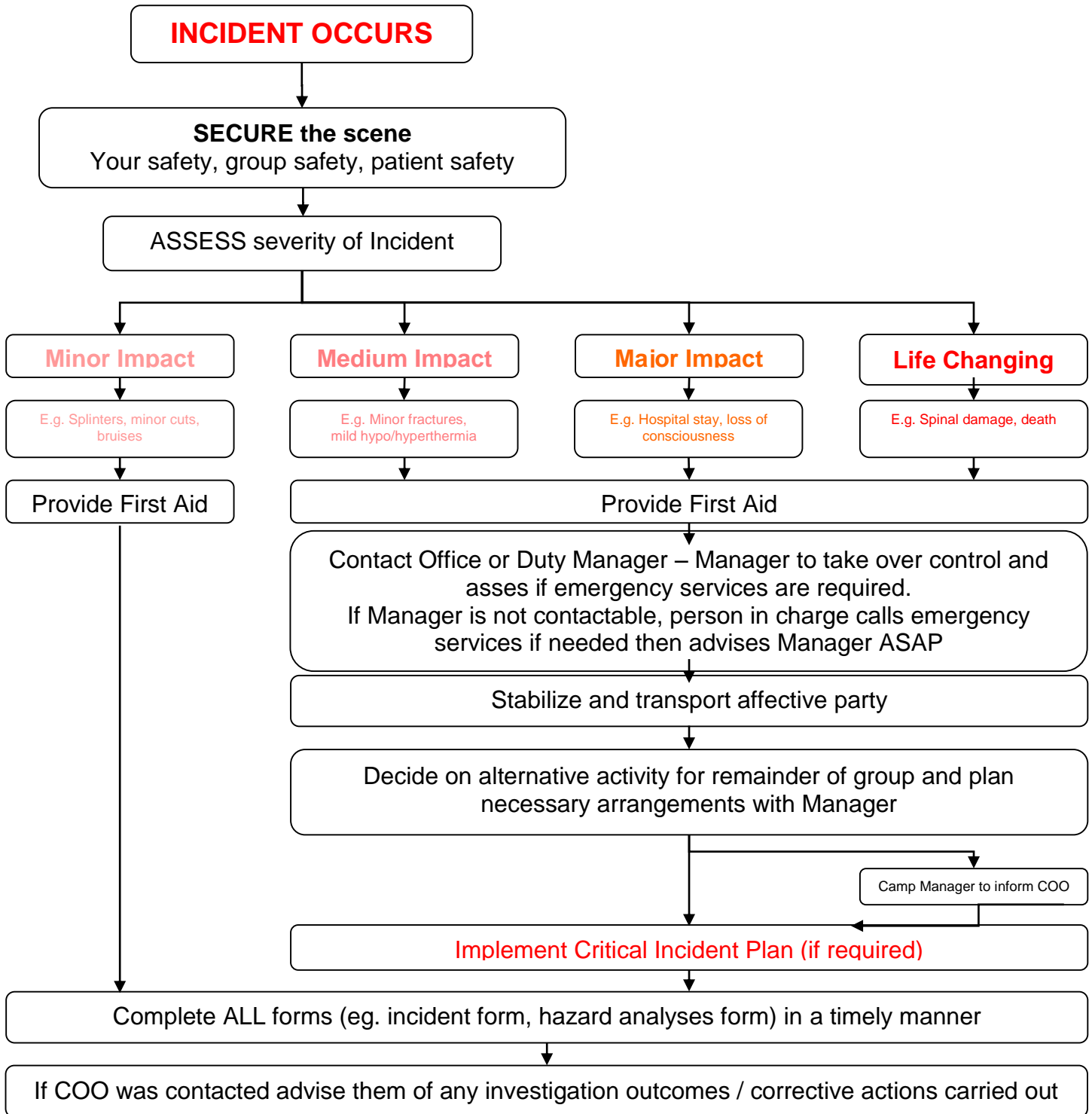
| | | | | |
|---------------------------------|--|---------------|------------|----------------------------|
| Activity | Low Ropes | | | |
| Activity Description | Team activity to negotiate a course of suspended low wires and logs. | | | |
| Activity Site | Camp Adair Grove | Water: | Camp Adair | Toilets: Camp Adair |
| Instructor Requirements | <ul style="list-style-type: none"> • Can manage entire group effectively • Ensure a first aid kit, radio and rescue kit is readily accessible in your area • Conduct pre use checks on the equipment, element, environment • Continually identify, manage and disclose hazards and risks • Clearly brief the group and ensure they understand their roles and can confidently perform them • Ensure correct clothing is worn | | | Instructor Level: 1 |
| Participant Competencies | <ul style="list-style-type: none"> • Identify their own challenge • Communicate with the team • Can understand and follow activity safety rules | | | Ratio: 1:12 |
| Equipment | <ol style="list-style-type: none"> 1. Covered footwear 2. Water 3. Clothes appropriate for the weather 4. First aid kit for the area | | | Weight: N/A |
| Policies | Standard operating procedures, SMS, Calling a halt to an activity | | | |
| Weather Factors | This activity can be run in most weather conditions | | | |

| Site Specific Hazard | Severity | Potential | Management of Hazard | Result |
|--|--------------------------------------|-----------|--|---|
| Falling branches from overhead trees | H | H | Site check before activity commences especially after windy or bad weather. | M |
| Slippery apparatus and ground | M | M | Ensure that clients are aware of the footing and proceed with caution. | M |
| Activity Specific Hazard | Severity | Potential | Management of Hazard | Result |
| Client falling off apparatus | L | M | Ensure correct spotting technique is carried out. | M |
| Abrasions and cuts from apparatus or ground. | L | M | Ensure whole group has appropriate closed toe footwear and clothing on before commencing. Monitor apparatus for signs of wear. | M |
| Severity & Potential: | <i>L = Low, M = Medium, H = High</i> | | Result: | <i>I = Isolates Hazard, M = Minimizes Hazard, E = Eliminates Hazard</i> |

Approved by – Lee Vaughan
Date – Thursday, 31 July, 2014

Reviewed by – Friday, 31 July, 2015

Incident Response Plan



YMCA Camp Adair Activity Management Plan

